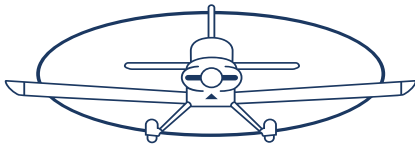


Howe Bulkhead Passthrough



**CLEVELAND
AIRCRAFT TOOL**

2225 First St. Boone, IA 50036

(515) 432-6794

Mail@CleavelandTool.com

www.CleavelandTool.com

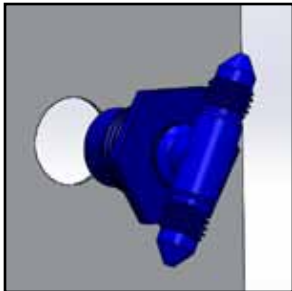
**1/8" Female NPT Each Side
5/8" Mounting Hole**



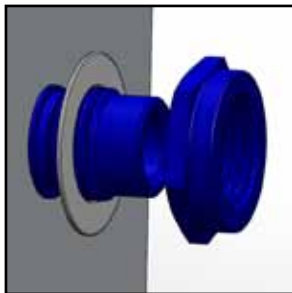
FPTH180

Contains: Fitting, Nut, Thrust Washer

Thank you for purchasing the Howe Bulkhead Passthrough made exclusively by Cleaveland Aircraft Tool. This Passthrough provides countless combinations of fitting possibilities. The instructions below are our recommendations on installation, but individual builders should use their judgement when considering where and when to use the fitting. These fittings should only be used in Experimental Aircraft. In the package you will find three parts, the Bulkhead Passthrough, the Thrust Washer, and the Nut. The thrust washer is intended to go under the nut to make it easier to tighten.



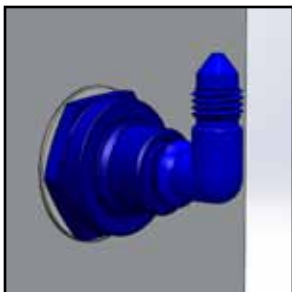
1. Begin by installing the fitting that will go in to the flange side of the Bulkhead Passthrough. Use an appropriate sealing material for the medium that you are plumbing for. Examples would be teflon tape, and pipe joint compound. Installing and 'clocking' the fitting before installation in the bulkhead eliminates having to install the fitting in a tight place.



2. Drill a 5/8" hole in the bulkhead using a #3 unibit, deburr sharp edges, re-ream if necessary.

3. Insert the Bulkhead Passthrough in the hole, placing the Thrust Washer and Nut on the other side, tighten until snug, then back off 1/4 turn.

4. Install fitting in the back side of the Bulkhead Passthrough using the same sealing material as on the first side. It is often easier to turn the flange of the Passthrough rather than rotating the fitting. Finish tightening into the clocked position by holding the flange of the Passthrough with a wrench and a wrench on the fitting itself.



5. Once clocked, continue to hold the flange on the Passthrough, and tighten the Nut with a wrench.

Please email us photos of areas where these fittings have saved you in your install. mike.toolman@gmail.com